

SCIENCE
Quest



I hear and I forget,
I see and I remember,
I do and I understand.



Summer Camp Parent Survival Kit 2017



I hear and I forget,
I see and I remember,
I do and I understand.



What is Science Quest?

Founded in 1988, Science Quest is a not for profit science, technology, engineering, and mathematics (STEM) based program operated on the campus of Queen's University in Kingston, Ontario that provides STEM educational programming to youth aged 4-15 in and around the Kingston community. Science Quest strives to engage and empower youth through our educational in-classroom workshops, summer camps and school year clubs sessions, all of which work towards sparking an interest in STEM within the 5000+ youth we reach annually.

Our Team



Science Quest Team, 1992

Our summer team is comprised of 3 directors and 18 instructors. All staff are highly trained Queen's University students who are studying science or engineering but most of all, they are a ton of fun! Our instructors create all of the camp programming on their own with oversight from the director team. This means each instructor had a hand in creating the amazing educational programming your children will partake in, so don't be afraid to ask them about it!

Meet Our Director Team!



Tristan Brunet **Head Director**

Civil Engineering Class of 2019

Beginning as an instructor in 2016, Tristan has now taken up the helm of this ship to lead the Science Quest team to victory and provide another awesome summer!

Matt Boulby **Business Director**

Chemical Engineering Class of 2018

Matt has a multitude of experience working with finance within the Engineering Faculty and as Science Quest's first mate he is ready to help keep this science ship sailing.

Broden Cecic **Outreach Director**

Chemical Engineering Class of 2017

Returning this summer to become Science Quest's quartermaster Broden looks on to the horizon, excited about this year's satellite camps and outreach ventures.

Meet Our Instructors!

Billy

Senior Instructor

Mechanical Engineering Class of 2017



Billy, who hails from Burlington, has always had a passion for engineering and his high school teacher Mr. Strong was who inspired him to go into Mechanical Engineering.

Lubnaa

Curriculum Coordinator

Life Science Class of 2020



Lubnaa has a passion for inspiring a love of science in others. Ever since she was a camper in Science Quest herself, she wanted to be an instructor to give the next generation of campers the same experience she had.

Timmy

Special Needs Instructor

Civil Engineering Class of 2020



Timmy is going into his second year of civil engineering and with a focus on the environment, Timmy wants to fight climate change and help the world reduce its carbon footprint.

Kaelan

Computing Class of 2019



As a child, Kaelan's early morning cartoons were Top Chef, Chopped, and the Food Network. He went on to study nutrition but after getting confused about what a breadboard is has been pursuing computer science ever since. He is extremely excited to share his tech know-how with everyone this summer.

Sabreena

Gender Studies Class of 2020



Sabreena's love for medicine was kick-started after discovering the various seasons of Grey's Anatomy. Sabreena is studying at Queen's for 2 years before going to medical school with the goal of becoming a surgeon. Sabreena is smart, dedicated, and is so excited to pass on her scientific knowledge to her campers!

Alex

Computer Engineering Class of 2019



After watching Star Wars as a kid, it was always Alex's dream to grow up and make a robot as cool as R2D2! He is now studying computer engineering to one day make that dream come true. He's excited to inspire campers to love tech and robots as much as he does and has planned awesome activities for the boys and girls of Science Quest.

Alastair

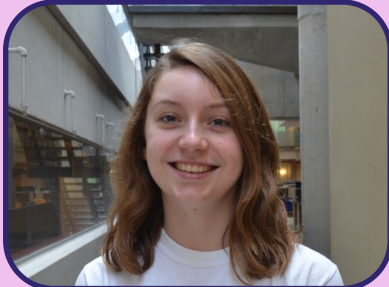
Chemistry Class of 2017



Alastair, from Victoria, British Columbia, recently graduated from Queen's Chemistry and will soon go on to pursue a master's degree. After having dreamt as a kid of becoming the next Bill Nye the science guy, he has decided to warm up off air at Science Quest and can't wait to begin inspiring young scientists.

Emily

Civil Engineering Class of 2019



Emily's passion for science stems from her childhood, where she was surrounded by engineering design and science. Being inspired from an early age she spent all of her time learning; from her times tables to the proper setting time of concrete. Emily's main goal this summer is to ensure that each child get to learn the fun STEM concepts she was fortunate enough to learn growing up.

Natalie

Chemical Engineering Class of 2020



Growing up Natalie was always an outgoing student in her classroom's, demonstrating an excitement to learn. Having always been invested in the environment, she hopes to use her chemical engineering degree to work towards a more sustainable planet. She is super excited to meet all of the campers and show them how rewarding a STEM education can truly be.

Neil

Civil Engineering Class of 2019



Neil made it his life ambition to design the most buoyant concrete canoe. As he continues to pursue this goal, Neil is soon to embark on his 3rd year in Civil Engineering. It is Neil's personal philosophy to make the unreal, real. At Science Quest, Neil inspires others to be just as ambitious as he pushes the very boundaries of science itself.

Annie

Applied Mathematics Class of 2020



When Annie was younger, she snuck downstairs to watch Terminator with her brother, enraptured by the idea of robots fighting for and against the good of mankind. Inspired by the power of Arnold Schwarzenegger and a love of healthcare, Annie decided to study Applied Mathematic Engineering in the Mechanical stream with the goal of becoming a biomechanical engineer.

Drew

Mechanical Engineering Class of 2018



Drew hails from the quaint township of Ajax, where he first discovered his passion for Engineering. He has learned to go with the flow through his extensive studying of fluid dynamics. Drew hopes that he will be able to share his undying passion for science with the campers at Science Quest.

Natalie

Civil Engineering Class of 2020



Natalie has always loved working with the sciences and understanding how things work. She has just finished her first year at Queen's University, and has decided to branch into civil engineering. Besides being an unreal Science Quest Instructor, she is also known for her dance moves and love of bridges.

Sara

English Class of 2019



Sara found a love for English through her time on stage with Justine Bieber tribute band "Bad Karma". Though Sara dabbled in computer engineering, her true passion lies in English and inspiring others. Sara is positive and sure to bring lots of good Karma to camp!

Sarah

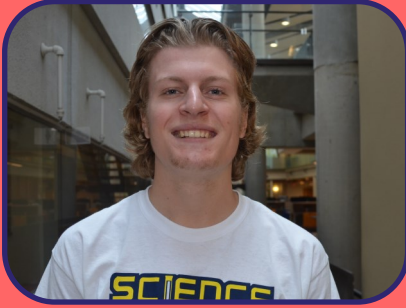
Geological Engineering Class of 2020



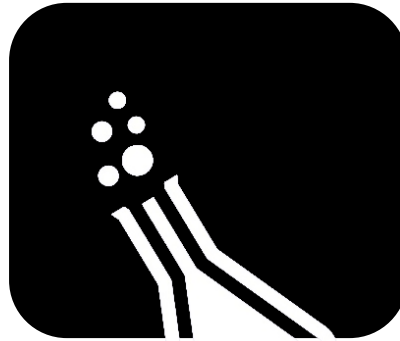
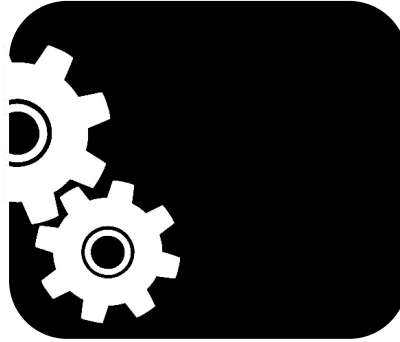
Ever since Sarah saw Pride Rock in Lion King she has been in love with rocks. Upon travelling to Africa to examine all the epic sand dunes and awesome rock structures there was no doubt in her mind that she wanted to be a geological engineer.

Neil

Mechanical Engineering Class of 2019



Neil grew up in a small town and was exposed to a lot of science growing up. He loved spending weekends in his garage fixing up cars with his brothers and this is where his love for engineering came from. He decided to pursue this by coming to Queen's for mechanical engineering.



Nick

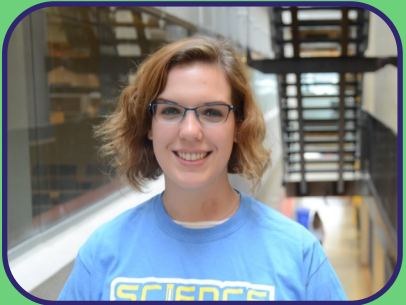
Applied Mathematics Class of 2020



While throwing a Frisbee backhanded, Nick considered the drag coefficient of the wind to calculate the optimal trajectory of the object in motion, and as his Frisbee struck a tree, an apple fell onto his head. It was at that moment that he had the realization that Apple Math (Applied Mathematic Engineering) was his

Kayla

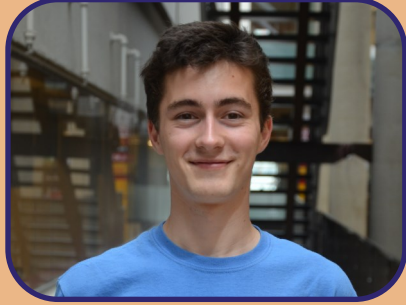
Geological Engineering Class of 2019



Kayla had no idea what she wanted to do after completing high school. She decided to travel to Guam and climb Mount Lamlam. She set out to find herself, but instead she found some rocks. Kayla then knew exactly how she wanted to spend the rest of her life, and began her studies in geological engineering.

Ben

Art History Class of 2019



Ben is currently pursuing a degree in art history and philosophy as he was inspired by the renowned artist, philosopher and inventor Leonardo da Vinci. He has mixed his love for science with his love for the arts. Ben can't wait to share the joy of invention with campers this summer!

Aliza

Biopsychology Class of 2018



Since day one, Aliza has been enthralled by how the human brain functioned. It was such a mystery and that excited her. She wanted to discover more and help contribute to research on the brain so her school counsellor suggested a career in Biopsychology and she hasn't looked back since.

A Week in the Life of a Science Quest

Monday

Drop off happens between 8:30-8:50. Campers will find their camp group and meet their instructors for the first time. From here, campers will be taken to our opening camp presentation where they will learn the structure for their week, watch some cool introduction videos, and swear the oath of a Science Quest camper outlining the rules of camp. Let the science begin!

Everyday

Campers will have up to 5 different science and engineering activities to look forward to each and every day while at Science Quest, including a weeklong design project. The rest of the day includes two snack breaks, and a lunch break where campers are encouraged to play soccer, Frisbee, and other outdoor games. Science Quest strives to spend as much time outside as possible in order to enjoy the beautiful summer weather!



Friday

Friday is our favourite day at Science Quest! In the morning all of our different camps come together to participate in a camp-wide game, and then after lunch everyone is given the opportunity to participate in water games! On Fridays we also invite friends and family to stop by to check out our “Friends and Family Showcase” where all of our campers are given the opportunity to share their projects with you! Arrive at Beamish-Munro Hall at 3:00pm and our LIT staff will direct you to the auditorium.

Important Information About Sending Your Child to Camp

This section contains very important information to ensure a fun, easy and safe week for both you and your camper.

Camp officially begins at **9:00 am** every morning. On Monday mornings, all campers must register with the Director team who will be located right inside the front doors of Beamish-Munro Hall. To ensure the fastest registration times, please feel free to arrive any time after 8:00 am and be prepared to resolve any outstanding fees for the week. Pick up time is at 4:00 pm. We accept **debit, Visa/Mastercard, cash, or cheque** (addressed to Science Quest).

Tuesday to Friday arrival time is **between 8:45 and 8:55**. Pick-up time is at **4:00**. The main entrance (on Union St) can be used for pick-up and drop-off from Monday to Friday.

End of the Day

Camper drop-off/ pick-up will take place at 4:00 pm in the main atrium every day, which is located to the right of the registration table in the large open area on the main floor.

Campers are only allowed to leave camp once their guardian has signed them out (unless the camper has permission to leave alone). The following rules will be strictly followed during sign-out:

Only those whose names are declared on the camper's Pick-Up form will be allowed to pick up that camper.

You must present valid ID (ie. Driver's license) to your camper's instructors whenever dropping off or picking them up. NO EXCEPTIONS. We will still expect you to present ID on Friday, even if the instructor knows who you are. Campers will not be allowed to leave camp without seeing the ID of someone on their pick-up list. This is a national camp security standard, and not the instructors' fault. If you make an instructor uncomfortable, or would like to speak with a Director instead, please come and see us in the main office.

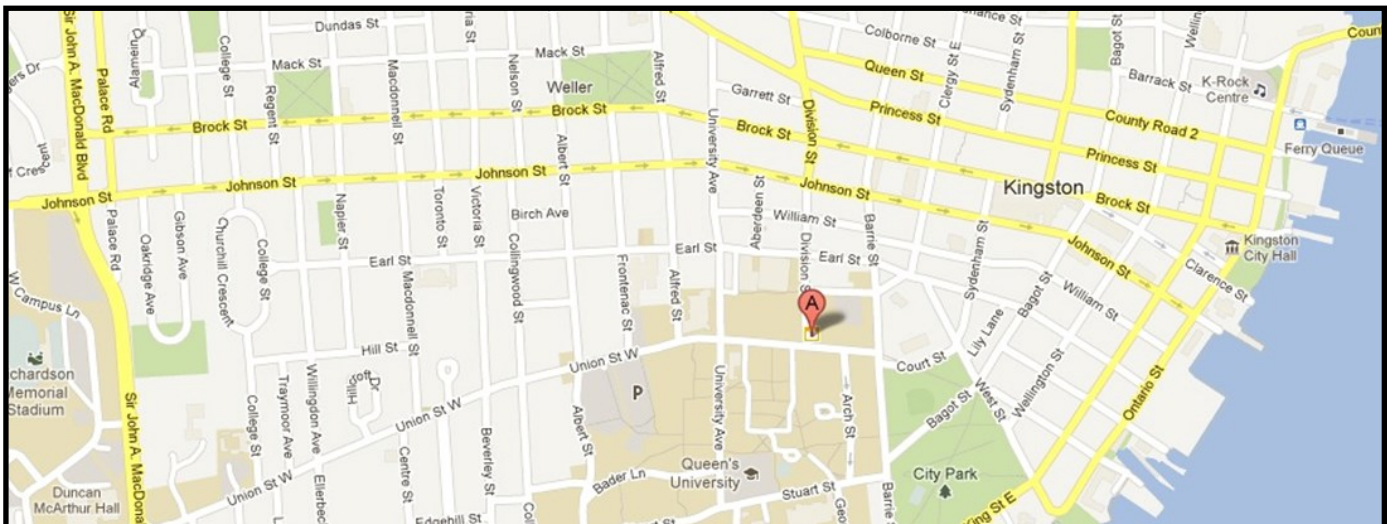
Early Pick Up, Late Drop Off

If for any reason your camper needs to leave camp early, please **contact our main office at 613-533-6870**. We will immediately inform your camper's instructor and they will notify your camper. Any **late sign-ins or early sign-outs must be made by contacting the main office**.

Where to Find Us



Day activities at camp takes place in **Beamish-Munro Hall**. There is construction happening all down Division St. this summer so directions might be a bit different from previous years. From Hwy 401, take the Division St Exit (#617) and travel South on Division. Turn left onto Earl St and then right on Barrie St. After turn right on Clergy St West and then right into the Parking Lot. This is the back entrance to Beamish-Munro Hall where, on Monday morning, our friendly instructors will be waiting to meet you! Our instructors will be out front to direct you to registration! Also the back lot is a Queen's parking lot so if you park there it's at your own risk. You can also park on Barrie St. or in front of the courthouse by City Park



Instructors will be waiting outside at both the rear and front entrance to help direct you to the registration table at the front of the building.

Extended Program

Extended program runs from 8 am to 5 pm in the Atrium, of the Beamish Munro Hall. We ask that you come with the camper to the front door to drop them off and pick them up.

If a camper is still not picked up by 5:10 pm, then an additional fee of \$10 will be charged for every 10 minute period after 5:00 pm. This fee excludes extenuating circumstances.

Lunch and Snacks

For the safety of our instructors and campers, Science Quest is NUT FREE. This means no nuts, products that contain nuts or products that may have come in contact with nuts.

Camp Lunch Program

Science Quest has a paid lunch program. You can order pizza or a sandwich for the entire week, or for just one day - whichever fits your schedule! Our lunch program also includes a snack for both our morning and afternoon snack breaks, as well as a drink and desert for lunch time. Our lunch options are as follows:

- Turkey and Cheese
- Ham and Cheese
- Vegetarian
- Chicken Salad
- Cold Cut Trio
- Pepperoni Pizza

Never worry about having to pack a lunch for your camper

If you are interested in ordering lunch some days or every day, please fill out the online form by following the link below:

<https://fs9.formsite.com/scienceq/form39/index.html>

Participation in our lunch program can be paid for with cash, cheque, or debit/credit during Monday morning registration, or you can pay online once you have filled out the form.

Medical and Other Emergencies

The following procedures will be followed in the unlikely case of an emergency:

- A Science Quest Instructor will immediately deal with the situation accordingly (ie. contact EMS or start the appropriate First Aid procedures). All instructors have certified First Aid and CPR– C training.
- Parents will be contacted immediately if further medical care is needed or will be notified at the end of the day (during sign-out) if the incident was minor.

As part of Queen’s University, we have access to Campus Security, which further enhances campers’ safety.

If ever you need to get in immediate contact with your camper, please call 613-533-6870

Accessibility and Inclusion

Science Quest promotes inclusion in all of its camp environments, and supports a wide variety of exceptionalities. All of our camp programming settings are fully accessible and our instructors receive training in working with children with special needs. We also employ a Special Needs Instructor with extensive exceptionality experience. For more information about this or to talk to Timmy, the Special Needs Instructor, please email info@sciencequest.ca

Wanted: Building Supplies

Science Quest uses many fun recyclables such as egg cartons, tissue boxes, toilet paper rolls, paper towel rolls, newspapers, and much more! If you, or anyone you know is trying to get rid of some of the above materials, please feel free to drop them off at our main office.



Camp Rules

Science Quest has a zero-tolerance policy for bullying or violence. Any deliberate acts of violence towards other campers or instructors will result in the immediate suspension of the camper from their program. Campers' reintegration into their program will be at the discretion of the Science Quest Directors.

Science Quest ensures that every camper has the best possible experience by using the following set of camper rules :

- I listen to my instructors
- I am here to have fun
- I am here to be safe
- I am kind to everyone
- I stay with the group
- I use my indoor voice
- I keep my hands to myself
- I keep my electronic devices in my backpack
- I keep at least one foot on the ground
- I know I can ask my instructors for help
- I ask my instructors when I need to leave the room

Science Quest has a 3-strike policy for rule violations. A camper gets a strike after multiple warnings. After the 2nd strike, you are notified at the end of the day, and after 3 strikes the camper may be sent home (depending on the severity of the infractions).

*Note that the rules of camp will be thoroughly explained to campers on the first day of camp, but we suggest that you review them with the camper beforehand as well.

Friends and Family Showcase

Each Friday afternoon at 3pm, we give you the chance to see all of the amazing projects your budding engineer or scientist has been working on all week long at our Friends and Family Showcase. The showcase will be held in Dupuis Hall Auditorium and will feature a slideshow of pictures followed by a tour of your camper's classroom where they can show off their amazing designs and projects! Please come to the atrium of Beamish-Munro Hall before 3pm so that one of our awesome LITs can direct you towards the Dupuis Hall auditorium.

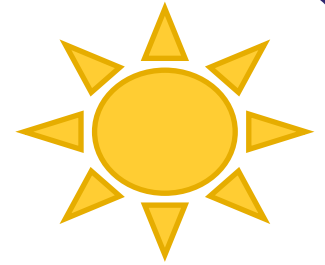
Questions?

Do not hesitate to contact our office at any time, we would be happy to answer your questions!

9:00am – 5:00pm
613-533-6870

Email us at:
info@sciencequest.ca

Or visit us online at:
www.sciencequest.ca



2017 Sponsors

**ONTARIO POWER
GENERATION**



CANADA 





(613) 533-6870
info@sciencequest.ca
www.sciencequest.ca

45 Union St, Room 106c
Queen's University
Kingston, ON
K7L 3N6

Permission to Dispense Medication Form

This waiver is to be used in cases where a camper will be self-administering medication or where staff are to help campers to take their medication at an appropriate time and dosage. This waiver is not necessary for campers who carry epipens and/or inhalers for self-administration as needed.

Science Quest policy is that all medication (inhalers and epipens excepted) should be kept in the office. Medication may be brought to the office at the start of the week or each morning, and should be delivered in a sealed, clearly labelled container (preferably the original container).

Camper Name: _____ Week(s) of Camp: _____

Medication Name: _____

Dose Amount: _____ Dose Timing: _____

Special instructions for taking this medication (i.e. with food): _____

Cautions, side effects and recommended action: _____

Prescribing Doctor: _____ Phone #: _____

I hereby authorize Science Quest staff to:

- administer medication to my child
- supervise my child to administer their own medication, dispensed by the Directors

I hereby acknowledge that the above information provided for the dispensing of medication for my child is accurate. I also understand that it is my responsibility to inform Science Quest of any changes to this information by completing another *Permission to Dispense Medication Form*.

I agree that Science Quest, Queen's University, the Engineering Society, and the Alma Mater Society shall not be liable for any injury to my child arising from or in any way resulting from the dispensing of medication to my child by Science Quest staff as set out in this form, UNLESS such injury is caused by the willful or negligent actions of the above named parties.

Parent/Guardian Name: _____

Parent/Guardian Signature: _____ Date: _____

Epi-pen Permission Slip

I, _____ (print name) authorize Science Quest Staff and Supervision to administer my child's Epi-pen in the event it is needed. My child will show the Staff where it is carried.

Parent/Guardian Signature _____

Dated _____

Ready for Camp Checklist

Before Camp:

- Paid remaining camp balance (This can be paid Monday morning)
- Ordered lunches through Online Lunch Program form found here
<https://fs9.formsite.com/scienceq/form39/index.html>
- Completed Pick up forms (if applicable)
- Signed Epi-pen/ Medication form is applicable

Monday morning:

- Debit, Visa, MasterCard, cheque or cash covering any outstanding registration fees (if applicable)

Every Day:

- Lunch and snacks – Litter free lunches are highly encouraged to keep our lunch area clean and the planet happy!
- Water bottle – Stay hydrated!
- Hat and sunscreen for when we go outside
- Close-toed shoes: Safer for running around during lunch and some tours require you to protect your feet!

Friday:

Friday is a special day that includes a camp-wide game done outdoors and water games in the afternoon. Campers should bring the following items on Friday:

- Lots of water
- Running shoes
- Sandals for the water games
- Swim suit or extra clothes, and towels
- Hat and sunscreen